



GRF-1 (phospho Tyr1105) Polyclonal Antibody

| | |
|---------------------------|--|
| Catalog No | YP-Ab-03292 |
| Isotype | IgG |
| Reactivity | Human;Mouse;Rat |
| Applications | WB;IHC;IF;ELISA |
| Gene Name | ARHGAP35 |
| Protein Name | Rho GTPase-activating protein 35 |
| Immunogen | The antiserum was produced against synthesized peptide derived from human GRF-1 around the phosphorylation site of Tyr1105. AA range:1071-1120 |
| Specificity | Phospho-GRF-1 (Y1105) Polyclonal Antibody detects endogenous levels of GRF-1 protein only when phosphorylated at Y1105. |
| Formulation | Liquid in PBS containing 50% glycerol, 0.5% BSA and 0.02% sodium azide. |
| Source | Polyclonal, Rabbit,IgG |
| Purification | The antibody was affinity-purified from rabbit antiserum by affinity-chromatography using epitope-specific immunogen. |
| Dilution | WB: 1/500 - 1/2000. IHC: 1/100 - 1/300. ELISA: 1/10000.. IF 1:50-200 |
| Concentration | 1 mg/ml |
| Purity | ≥90% |
| Storage Stability | -20°C/1 year |
| Synonyms | ARHGAP35; GRF1; GRLF1; KIAA1722; Rho GTPase-activating protein 35; Glucocorticoid receptor DNA-binding factor 1; Glucocorticoid receptor repression factor 1; GRF-1; Rho GAP p190A; p190-A |
| Observed Band | 160kD |
| Cell Pathway | Cytoplasm, cytoskeleton, cilium basal body . Cytoplasm . Nucleus . Cell membrane . In response to integrins and SDC4 and upon phosphorylation by PKC, relocalizes from the cytoplasm to regions of plasma membrane ruffling where it colocalizes with polymerized actin. . |
| Tissue Specificity | Detected in neutrophils (at protein level). |
| Function | function:Represses transcription of the glucocorticoid receptor by binding to the cis-acting regulatory sequence 5'-GAGAAAAGAACTGGAGAACTC-3'. May participate in the regulation of retinal development and degeneration. May transduce signals from p21-ras to the nucleus, acting via the ras GTPase-activating protein (GAP). May also act as a tumor suppressor. PTM:Phosphorylated upon DNA damage, probably by ATM or ATR. PTM:Tyrosine phosphorylated. similarity:Contains 1 Rho-GAP domain. similarity:Contains 4 FF domains. subunit:Interacts with p120GAP. . |
| Background | The human glucocorticoid receptor DNA binding factor, which associates with the promoter region of the glucocorticoid receptor gene (hGR gene), is a |



repressor of glucocorticoid receptor transcription. The amino acid sequence deduced from the cDNA sequences show the presence of three sequence motifs characteristic of a zinc finger and one motif suggestive of a leucine zipper in which 1 cysteine is found instead of all leucines. The GRLF1 enhances the homologous down-regulation of wild-type hGR gene expression. Biochemical analysis suggests that GRLF1 interaction is sequence specific and that transcriptional efficacy of GRLF1 is regulated through its interaction with specific sequence motif. The level of expression is regulated by glucocorticoids. [provided by RefSeq, Jul 2008],

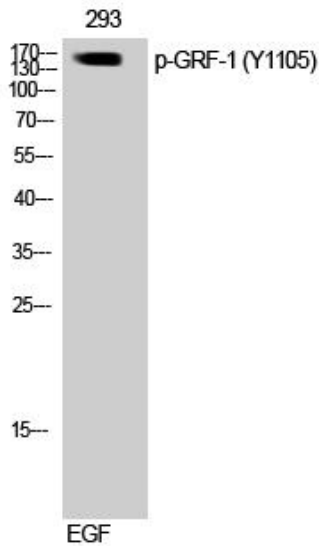
matters needing attention

Avoid repeated freezing and thawing!

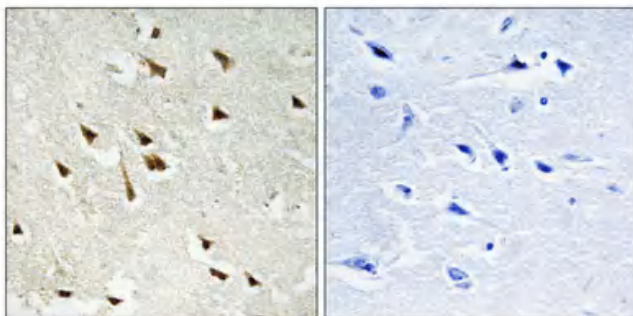
Usage suggestions

This product can be used in immunological reaction related experiments. For more information, please consult technical personnel.

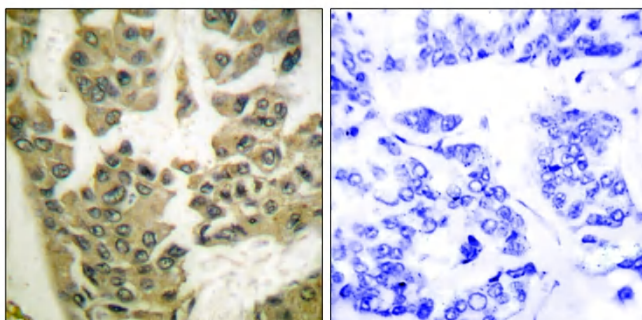
Products Images



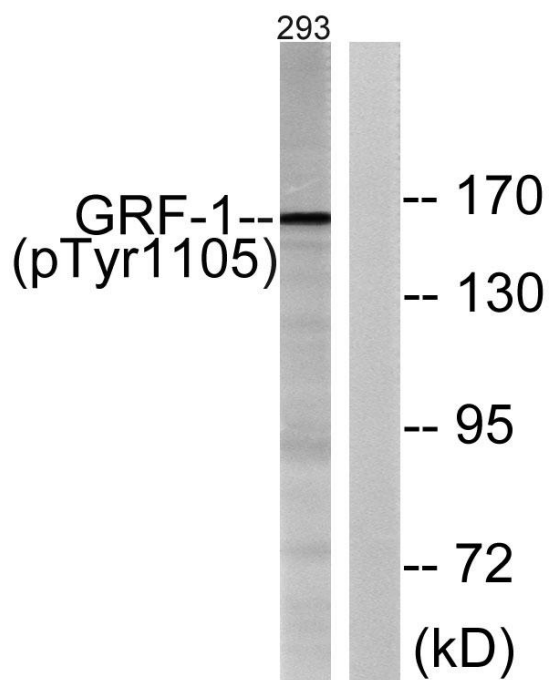
Western Blot analysis of 3T3 cells using Phospho-GRF-1 (Y1105) Polyclonal Antibody



Immunohistochemical analysis of paraffin-embedded Human brain. Antibody was diluted at 1:100(4° overnight). High-pressure and temperature Tris-EDTA, pH8.0 was used for antigen retrieval. Negative control (right) obtained from antibody was pre-absorbed by immunogen peptide.



Immunohistochemistry analysis of paraffin-embedded human breast carcinoma, using GRF-1 (Phospho-Tyr1105) Antibody. The picture on the right is blocked with the phospho peptide.



Western blot analysis of lysates from 293 cells treated with EGF 200ng/ml 30', using GRF-1 (Phospho-Tyr1105) Antibody. The lane on the right is blocked with the phospho peptide.